



#7 Model number: 38SSP28764BH19

4 beds • 2 baths • 2128 sq.ft. • 28' width • 76' depth

Our home building facilities invest in continuous product and process improvements. Plans, dimensions, features, materials, specifications and availability are subject to change without notice or obligation. Renderings and floor plans are representative likenesses of our homes and may differ from the actual homes. We invite you to tour a Home Center near you and inspect the highest value in quality housing available or call (318) 752-4663 to speak with a Home Consultant. Copyright 2017, CMH. All rights reserved.

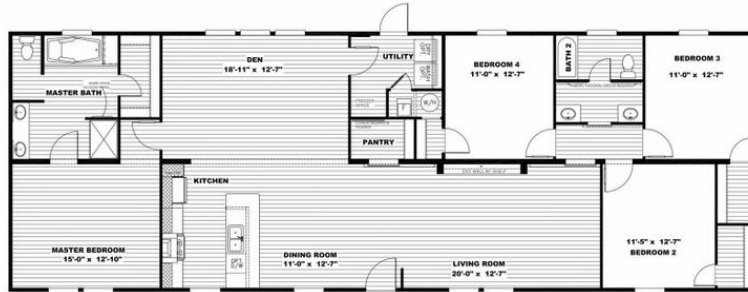
<https://www.claytonbossiercity.com>

**CLAYTON HOMES-
BOSSIER CITY**

**3730 EAST TEXAS AVE.
BOSSIER CITY, LA 71111**

Monday - Thursday: 9am - 6pm
Friday: 9am - 6pm
Saturday: 9am - 5pm
Sunday: Closed

(318) 752-4663



2,001 SQ.FT.
MODEL# SSP28764B
BREEZE 2.5
DRAWING # 38M154

#7 Model number: 38SSP28764BH19

4 beds • 2 baths • 2128 sq.ft. • 28' width • 76' depth

Our home building facilities invest in continuous product and process improvements. Plans, dimensions, features, materials, specifications and availability are subject to change without notice or obligation. Renderings and floor plans are representative likenesses of our homes and may differ from the actual homes. We invite you to tour a Home Center near you and inspect the highest value in quality housing available or call (318) 752-4663 to speak with a Home Consultant. Copyright 2017, CMH. All rights reserved.

<https://www.claytonbossiercity.com>

CLAYTON HOMES-
BOSSIER CITY

3730 EAST TEXAS AVE.
BOSSIER CITY, LA 71111

Monday - Thursday: 9am - 6pm
Friday: 9am - 6pm
Saturday: 9am - 5pm
Sunday: Closed

(318) 752-4663